



Dun Laoghaire to Dingle Race 2011

Saturday 11th June 2011

Sailing Instructions

Organising Authority

National Yacht Club

in association with

**Cumann Bádóirí Naomh Bhréanainn
(Dingle Sailing Club)**

Generously sponsored by



**Dingle Skellig Hotel
& Peninsula Spa**

CONFERENCE CENTRE & LEISURE CLUB



1. RULES

- 1.1 The race will be governed by the rules as defined in the Racing Rules of Sailing.
- 1.2 The Rules of IRC, the Prescriptions of the Irish Sailing Association (ISA), the International Regulations for Preventing Collisions at Sea (IRPCAS) and the ORC/ISAF Special Regulations will apply.
- 1.3 Between sunset and sunrise, rules 10 to 19 shall cease to be applicable and shall be replaced by Part D (Steering and Sailing Rules) of the International Regulations for Preventing Collisions at Sea (IRPCAS).
- 1.4 A boat chartered or loaned with the approval of the Organising Authority may carry national letters or sail numbers other than its own, provided that particulars of same are furnished to the Race Office prior to 1800 hours on Friday 10th June 2011. This amends rules Appendix G.

**NOTE: A copy of ISAF Regulation 20 may be downloaded from:
[http://www.sailing.org/tools/documents/2009ISAFRegsNovChanges-\[6805\].pdf](http://www.sailing.org/tools/documents/2009ISAFRegsNovChanges-[6805].pdf)**

2. NOTICES TO COMPETITORS

- 2.1 Notices to competitors and results will be posted on the Official Notice Board located in the National Yacht Club and/or at the Race Office at Dingle Marina.

3. CHANGES TO SAILING INSTRUCTIONS

- 3.1 Changes in Sailing Instructions will be posted on the Official Notice Board before 07.30 hrs on Saturday 11th June 2011.

4. SIGNALS MADE ASHORE

- 4.1 Signals made ashore prior to the start, but excluding signals relating to the starting procedure, will be displayed from the flagstaff of the National Yacht Club.
- 4.2 International Code Flag “AP”, Answering Pennant, with two sound signals, (1 sound signal when lowered) means “Racing is postponed”. *The warning signal will be made not less than 60 minutes after “AP” is lowered.*

5. CLASS FLAGS

- 5.1 Boats competing in the Racing Class shall fly Class Flag ICS Numeral 1 from the backstay.
- 5.2 Boats competing in the Cruiser Class shall fly Class Flag ICS Numeral 5 from the backstay.

5.3 Boats competing in the Two-Handed Class shall fly Class Flag ICS Numeral 2 from the backstay.

6. THE START

6.1 The starting line will be located within Scotsman's Bay, East of Dun Laoghaire Harbour, between a striped pole on the Committee Boat displaying the burgee of the National Yacht Club and an orange inflatable starting mark. Starting signals will be displayed from the Committee Boat.

6.2 The starting line shall be crossed in the direction of the course to the Muglins.

6.3 The scheduled time of the warning signal is 10.00hrs and the starting signal 10.05hrs. The race committee may transmit on Ch 74.

7. RECALLS

7.1 Boats not responding to a recall shall be subject to a 20% time penalty. This amends rules 29 and 30.

8. THE COURSE

8.1 The course shall be from the starting line in Scotsman's Bay, East of Dun Laoghaire Harbour, leaving to starboard Ireland and all its islands and rocks showing permanently above high water and situated on the landward side of the line joining the seaward extremities of:

- (i) Muglins
- (ii) Wicklow Head
- (iii) Tuskar Rock
- (iv) Barrels Light Buoy
- (v) Bore Rocks Buoy
- (vi) Coningbeg Lanby
- (vii) Red Bank Buoy
- (viii) Old Head of Kinsale
- (ix) Fastnet Rock
- (x) Mizen Head
- (xi) Gull Rock (off Bull Rock) and
- (xii) Washerwoman Rock (off Great Skellig)

and thence to the finishing line at the entrance to Dingle Harbour. This amends the Notice of Race.

8.2 Wholly man-made structures such as oil or gas rigs may be ignored.

9. APPROACHING THE FINISH

- 9.1 When approximately 5 miles from the finishing line, *and again* when approximately 10 minutes from finishing line, each boat shall advise the Organising Authority of its approach on VHF Channel 37 (Marina), call sign “*Dingle Race Finish*”. See also *Appendix A*.

10. THE FINISH

- 10.1 The finishing line will be a line bearing approximately 286°M in the position indicated on the chart referred to in *Appendix A* of these SIs.
- 10.2 The finishing line will be defined as a transit from two red poles (surmounted at night by flashing strobe lights) located on the Eastern shore of the entrance to Dingle Harbour 2 cables approximately NW of Beenbane Point.
- 10.3 A red or orange inner limit mark, which may display a flashing light at night, will be positioned approximately one cable from the Eastern shore of the Harbour entrance and shall be left to starboard when crossing the line to finish. This mark may not be on the finishing line.
- 10.4 The Western extremity of the finishing line will be marked by a ruined beacon which is not clearly visible but which may be marked with white paint.
- 10.5 **CAUTION:** “Fungie”, the Dingle Dolphin, and accompanying pleasure boats, divers and swimmers frequent the harbour entrance. Boats shall proceed with caution from the finishing line to the Marina.

11. IDENTIFICATION AND TIMING AT THE FINISH

- 11.1 A boat finishing during the hours of darkness shall illuminate her sail number with a powerful light or a white flare.
- 11.2 When crossing the finishing line a boat shall record her finishing time together with the approximate finishing times of the boats immediately ahead and astern, if possible, and shall enter such details on her Declaration Form (*Appendix B* of these SIs).

12. PENALTY SYSTEM

- 12.1 The Two-Turns Penalty, rule 44, will apply. A boat having taken a penalty shall report the incident(s) on her Declaration Form (*Appendix B* of these SIs).

13. TIME LIMITATIONS

- 13.1 The time limit for the race shall be 18.00 hours on Tuesday 14th June 2011.

14. DECLARATIONS

- 14.1 A Declaration Form, included in *Appendix B* of these SIs, shall be signed by two crew members and shall be lodged in the Race Office in Dingle within two hours of a boat's finishing time.
- 14.2 Failure to complete and lodge a declaration shall lead to disqualification without a hearing. This amends rule 63.1.

15. PROTESTS

- 15.1 Protest forms shall be available at the Race Office in Dingle Marina. Protests shall be delivered there within 2 hours of the protesting boat's finishing time.
- 15.2 The Protest Committee will hear protests as soon as possible after, and in approximately the order of, receipt. The helmsmen or owners of the boats involved shall remain in contact with the Race Office at Dingle so that they may be advised of times and locations of protest hearings.

16. RETIRING

- 16.1 Boats retiring shall comply with the following procedures:
- 16.1.1 Immediately on retirement, inform the nearest Coastal Radio Station of the boat's retirement, the reason, whether assistance is needed, where the boat is heading, and its expected time of arrival at that destination, and request that Station to notify the Race Office at Dingle.
- 16.1.2 Immediately on arrival at the specified destination, inform the nearest Coastal Radio Station that the boat has arrived safely, and request that Station to notify the Race Office at Dingle.
- 16.1.3 In the event – and **ONLY** in the event – of a radio communications failure, advise the Race Office of the boat's retirement and current situation to Martin Crotty at 087 257 5894 or Brian Barry at 087 280 3903.

WARNING: Failure to comply with SI 16 will render the owner and/or skipper liable for all costs incurred by the Race Committee and/or the Race Organisers and/or any other parties involved in search, location and/or similar work occasioned by such non-compliance.

17. USE OF ENGINE

- 17.1 An engine may be used to recover a man overboard, to render assistance, or in any other grave emergency, and full details shall be reported on the Declaration Form (*Appendix B* of these SIs).
- 17.2 An engine with propeller disengaged, or power pump, may be used for charging batteries, pumping bilges or supplying power for weighing anchor.

- 17.3 At the discretion of the Race Committee, an engine or tow may be used by a boat arriving late at the start provided that she:
- (i) switches off her engine or drops her tow and then completes a 360° turn before starting,
 - (ii) does not start until five minutes after the starting signal, and
 - (iii) reports the incident on her Declaration Form (*Appendix B* of these SIs).
- 17.4 In the interest of safety in the starting area engines may be used for propulsion up to three minutes before the Starting Signal.
- 17.5 This amends rule 42.

18. TEMPORARY DISCONTINUANCE OF RACING

- 18.1 After a boat starts she may, without penalty, moor or berth alongside any fixed, anchored or made-fast object for the purpose of taking shelter, disembarking crew who shall take no further part in the race, or attempting repairs from entirely her own resources. Mechanical propulsion may be employed for no longer than five minutes each for the purpose of berthing and departure from the temporary berth. However, crew intending to continue racing shall not go ashore other than solely for the purpose of mooring.
- 18.2 A boat availing herself of this privilege shall **NOT** seek or accept outside assistance.
- 18.3 It is prohibited for any work to be done off the boat including that by any person on a pontoon, dock or tender, etc., other than on a tender carried by the boat when racing.
- 18.4 It is prohibited to take on equipment, supplies, spares, components or tools of any kind.
- 18.5 It is prohibited to take on food, water, beverages, fuel or stores of any kind.
- 18.6 It is prohibited for any crew member to eat or drink except on board using the boat's original supplies.
- 18.7 A description of all relevant activities during a boat's discontinuance of racing shall be submitted to the Race Committee with the Declaration Form (*Appendix B* of these Sailing Instructions) within the time specified.
- 18.8 This amends rule 45 and 47.2.

19. PENALTIES FOR RULE INFRINGEMENTS

- 19.1 The Race Committee or Protest Committee, if either considers that a breach of the rules has been committed, may:

- (i) disqualify the boat or boats concerned
- (ii) impose a penalty by allotting to the boat or boats concerned a 20% time penalty. A boat infringing a rule in more than one incident may receive a 20% penalty for each incident.

20. SCORING

20.1 Boats shall be scored on the basis of corrected time using IRC Handicap.

21. REPORTING

21.1 At the time of passing the following positions, boats shall report their position to the specified Coast Radio Station on its working channel or, failing that, on VHF Ch 16:

Position	Coast Radio Station	VHF Working Channel
Due South of Coningbeg Lanby (06° 38' .57W)	Rosslare Radio	Ch 23
Due South of Old Head of Kinsale Lighthouse (08°31'.98W)	Cork Radio	Ch 26
Due South of Mizen Head Lighthouse (09°49'.18W)	Bantry Radio	Ch 23
Due West of Washerwoman Rock (off Great Skellig – 51°46'.09N)	Valentia Radio	Ch 24

21.2 The circumstances of any delay, or failure to report, shall be detailed on the Declaration Form (Appendix B of these SIs).

21.3 Boats may be required to carry satellite tracking devices provided by the Race Committee.

22. SHORE CONTACT AND CREW LISTS

22.1 Two copies of the Shore Contact and Crew List included in *Appendix C* of these SIs shall be completed by the boat's owner / skipper. One completed copy shall be submitted to the Race Committee of the National Yacht Club before 1800 hrs on Friday 10th June 2011. The second copy shall be retained by the shore contact for reference in the case of emergency.

23. SAFETY REGULATIONS AND SAFETY CHECKS

23.1 Competing boats shall comply with ORC/ISAF Special Regulations 2010 – 2011 for races of Category 3 Monohulls with Liferaft.

**NOTE: A copy of these Special Regulations may be downloaded in PDF format from:
www.rorc.org/specialregulations**

- 23.2 The Special Regulations checklist provided in *Appendix D* of these sailing instructions shall be completed, signed by the owner/skipper and returned to the Race Committee at the National Yacht Club not later than 1800 hrs on Friday 10th June 2011.
- 23.3 Safety inspections will be carried out by or on behalf of the Race Committee before the race. **Unless otherwise agreed in writing with the Race Director, competing boats shall be available for inspection at Dun Laoghaire from 1200 hours on Wednesday 8th June 2011.** A boat not available for inspection, or found not to comply with the requirements of ORC/ISAF Special Regulations for races of Category 3 Monohulls with Liferaft shall be disqualified. This amends the Notice of Race.
- 23.4 The Race Committee reserves the right to order safety inspections and/or measurement of boats or their sails and equipment at any time before, during or immediately after the event.
- 23.5 **CAUTION:** Boats shall keep clear of the Stena HSS, and other commercial vessels in, and in the approaches to, Dun Laoghaire harbour.

24. ADVERTISING

- 24.1 Advertising will be in accordance with ISAF Regulation 20. The Organising Authority may require competing boats to carry event sponsor advertising on the hull.

25. PRIZES

- 25.1 Prizes shall be awarded as follows:

- | | | |
|-------|---|--|
| (i) | <i>Skellig Hotel Trophy</i> | 1st Overall on handicap. |
| (ii) | <i>Seamus Gallagher Memorial Trophy</i> | Line Honours - 1st boat to complete the course. |
| (iii) | <i>Halidon Trophy</i> | 1st Racing Class on corrected time. |
| (iv) | <i>Alice Commemoration Trophy</i> | 1st Cruiser Class on corrected time. |
| (v) | <i>National Yacht Club Bowl</i> | 1 st Two-handed Class on corrected time |
| (vi) | <i>Other prizes</i> | At the discretion of the Race Committee |

26. DISCLAIMER OF LIABILITY

- 26.1 The safety of a boat and her crew is the sole and inescapable responsibility of the owner(s) or the owner's representative whose obligation it is to ensure that the boat is fully sound, seaworthy, manned by an experienced crew, and equipped with all the necessary safety gear.

26.2 Neither these Sailing Instructions nor the inspection of a boat by any of the organising authorities in any way limits or reduces the complete and unlimited responsibility of the owner(s) or owner's representative.

26.3 The decision with regard to starting and continuing to race lies exclusively with the skipper of each boat, who is at all times personally responsible for the safety of the boat and its crew. Competitors participate in the race entirely at their own risk. See rule 4, Decision to Race. The National Yacht Club (organizing authority), Cumann Bádóirí Naomh Bhréanainn (Dingle Sailing Club), or the Dingle Skellig Hotel, will not accept any liability for material damage or personal injury or death sustained in conjunction with or prior to, during, or after the race.

27. INSURANCE

27.1 Each participating boat shall be insured with valid third-party liability insurance with a minimum cover of €1,300,000 per event or the equivalent.. See also Appendix D.

28. OFFICIAL TITLE

28.1 The official title of this race is “Dun Laoghaire to Dingle Race”. This title is the property of the National Yacht Club.

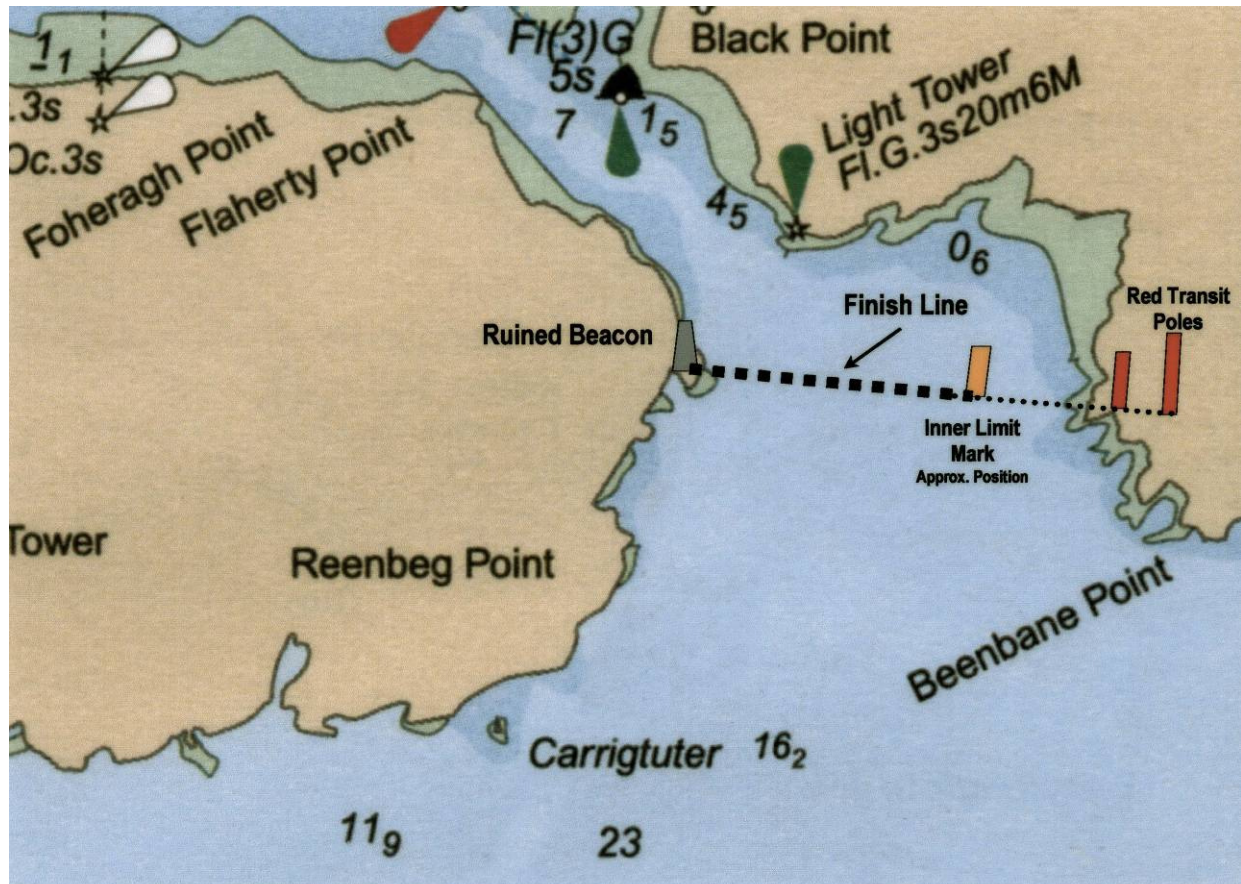
INFORMATION

- A. High Water at Dun Laoghaire on 11th June 2011 is at 08.05 hours and Low Water is at 14.05 hours approximately.
- B. All times expressed in the Sailing Instructions relate to summer time.

Appendix A

Details of Finishing Line

Please note that this chart is for guidance only, and must NOT to be used for navigation.



Appendix B - Declaration Form

Dun Laoghaire to Dingle Race 2011

Declaration specified in SIs 11.2, 12.1, 14.1, 17.1, 17.3.(iii), 18.7

Boat : **Name** _____ **Sail No.** _____

Skipper's Name _____

We, being two crew members of the above boat in the Dun Laoghaire to Dingle Race 2011, declare that in the race this boat:

- | | | |
|---|---|--------------------------|
| | | Tick box as appropriate |
| 1 | Started, sailed the course and finished in accordance with the Sailing Instructions and without infringement of racing rules Part 2 | <input type="checkbox"/> |
| 2 | Started, sailed the course and finished in accordance with the Sailing Instructions and acknowledged an infringement of racing rule Part 2 and completed the penalty under Sailing Instruction 12 for the incident(s), the details of which are listed in full below. | <input type="checkbox"/> |

The following are the details of incidents referred at 2 above and of incidents which a boat is obliged to declare under SI 17 (Use of engine), SI 18 (Boats moored after Preparatory Signal), SI 18 (Temporary discontinuance of sailing), SI 21 (Reporting), and SI 12 (Penalties)* (Use extra sheets if required.) :

* In the case of declarations under SI 12 Penalties, each such incident shall be declared together with the name and sail number of the boat infringed, and the location, date and time of the incident

Finishing time as recorded on board (SI 11.2) **Date:** _____ **Time:** _____

Boat ahead: Name: _____ **Date:** _____ **Time:** _____

Boat astern: Name: _____ **Date:** _____ **Time:** _____

Signed: (i) _____ **(ii)** _____

Date _____ **Time** _____

Received at Race Office:

Signed: _____ **Date:** _____ **Time:** _____

Dun Laoghaire to Dingle Race 2011

Shore contact and crew list specified in SI 22.1

**This item is concerned with your own personal safety and that of your crew.
DON'T SCRIBBLE. Write NEATLY and LEGIBLY, using BLOCK CAPITALS.**

Two copies of this Shore Contact and Crew List shall be completed by the boat's owner/skipper. One completed copy shall be submitted to the Race Committee of the National Yacht Club **before 1800 hrs on Friday 10th June 2011**. The second copy shall be retained by the nominated Shore Contact for reference in the case of emergency.

Boat : **Name** _____ **Sail No.** _____

Person ashore nominated as contactable in the event of an emergency:

Name _____

Address _____

Telephone Numbers Daytime _____ Evening _____

List of crew members (inc skipper):

	Name	Address	Telephone Numbers	
			Daytime	Evening
1				
2				
3				
4				
5				
6				
7				
8				
9				
10				

Dun Laoghaire to Dingle Race 2011

Shore contact and crew list specified in SI 22.1

This item is exclusively concerned with your own personal safety and that of your crew. Write NEATLY and LEGIBLY, using BLOCK CAPITALS

Two copies of this Shore Contact and Crew List shall be completed by the boat's owner/skipper. One completed copy shall be submitted to the Race Committee of the National Yacht Club **before 1800 hrs on Friday 10th June 2011**. The second copy shall be retained by the nominated Shore Contact for reference in the case of emergency.

Boat : **Name** _____ **Sail No.** _____

Person ashore nominated as contactable in the event of an emergency:

Name _____

Address _____

Telephone Numbers Daytime _____ Evening _____

List of crew members (inc skipper):

	Name	Address	Telephone Numbers	
			Daytime	Evening
1				
2				
3				
4				
5				
6				
7				
8				
9				
10				

Appendix D - ORC/ISAF Special Regulations Declaration

Dun Laoghaire to Dingle Race 2011

ORC/ISAF Special Regulations declaration specified in SI 23.2

As specified in the SIs, competing boats shall comply with the ORC/ISAF Special Regulations for races of Category 3 Monohulls with Liferaft. This Special Regulations Declaration shall be completed, signed by the owner/skipper and returned to the Race Committee at the National Yacht Club not later than 1800 hours on Friday 10th June 2011.

Boat

Sail No.

I declare that I, the undersigned, am the owner, or the skipper, of the above-named Boat.

I declare that I have read, and understand, the requirements of the **ORC/ ISAF Special Regulations Governing Offshore Racing for races of Category 3 Monohulls with Liferaft**, that I have inspected my boat, and that she complies in every respect with the requirements of these Regulations.

I agree to be bound by the Racing Rules of Sailing the prescriptions of the Irish Sailing Association (ISA), the ORC/ISAF Special Regulations, the IRC Handicapping System, the Notice of Race, and these Sailing Instructions (SIs). I have read paragraph 1.02 of the Special Regulations, and I accept the owner's responsibilities specified therein.

I have effected, or before racing I will effect, adequate and suitable insurance in respect of all liabilities howsoever arising from the above-named boat's participation, or intended participation, in the event, including, but not limited to, the specifications of SI 27.1.

I will ensure, before racing, that my crew is aware of the undertakings in this Declaration.

I agree that my boat will be available for inspection by the Race Committee at any time before, during or immediately after the event.

Signed

Date

Name of Signatory (PRINT)

.....
Received at Race Office:

Signed:

Date:

Time:
